

Blowers Green Primary: School at Home Year 2

Tuesday 12th May 2020



E-mail: yeartwo@blowers.dudley.sch.uk

Good morning Class 2!

Below are your 'School at Home' tasks for today along with any links and resources which will help you to complete your home learning.

You can e-mail any questions you might have to the e-mail address above.

Some supporting materials and tasks are at the bottom (after the table below).

Keep scrolling down to find them!



Good luck and well done for continuing your learning and working so hard! I can't wait to see your work.

Miss Pylypiak-Clancy

P.S. Remember, you also have your challenges to work on!

Subject	Task
Maths	<p><u>Warm your maths brains this morning by practising your number bonds.</u></p> <p>Practise your number bonds to 10 and 20 with someone in your household. How many can you recall in 2 minutes?</p>
	<p>Quick recap challenge- How many groups of numbers can you reorder from smallest to largest in 3 minutes?</p> <ol style="list-style-type: none"> 4 7 2 5 8 3 14 3 9 18 22 17 18 8 28 88 82 58 54 34 14 40 55 8
	<p>Addition and subtraction fact families</p> <p>Recap</p> <p>When we have one number sentence, we can always work out related number facts to create 3 more number sentences. This is called a fact family. For example:</p> <p>We know that, $3 + 2 = 5$</p> <p>So we also know that,</p> $2 + 3 = 5$ $5 - 3 = 2$ $5 - 2 = 3$ <p>Remember when we drew a fact family triangle in class? You can use these again to help you. Use the video to recap your learning.</p> <p>https://www.youtube.com/watch?v=9IhZDEffyTk</p>
	<p>Today, we want you to practise finding the fact family from a subtraction</p>

number sentence.

Find the fact family. Do as many as you can. Start on red, then yellow, then green. Green questions need you to put the numbers in a subtraction number sentence first. Do the challenge below if you can.

1. 10 - 3 =	5. 20 - 12 =	9. 29, 17, 12
2. 9 - 5 =	6. 17 - 3 =	10. 16, 23, 7
3. 10 - 5 =	7. 20 - 9 =	11. 22, 8, 30
4. 8 - 4 =	8. 15 - 7 =	12. 42, 27, 15

Our rules

- 1) When adding, the biggest number must go last.
- 2) When subtracting, the biggest number must go first.
- 3) You should have 2 addition and 2 subtraction number sentences in your fact family.

Tip: remember to check each answer in your number sentence.

Challenge

Using our rules, explain to someone in your house how you find a fact family with the numbers 13, 58 and 45.

Phonics/
SPaG

Spelling, punctuation and grammar

Complete the activity attached below. Do as many questions as you can in 10 minutes to warm up your brain.

Writing

Today, we are going to continue writing our story, 'The Selfish Crocodile' by Faustin Charles.



Today, we are going to think about the setting. All the animals are quietly watching on. So, if we were in the forest, we would not be able to hear a sound. To help us to describe this, we can use a simile. A simile is a sentence that compares one thing to another using like or as.



His eyes were as blue as the sky.

She ran fast like a cheetah.

The cat was as quiet as a sleeping baby.

Today, I want you to write some simile sentences to describe the quietness of the forest. I have given you a few ideas below.

As quiet as a _____.

sleeping baby

still water

a library at night

the bottom of the ocean

the hall when assembly is about to start

Here is my sentence:

The forest was as quiet as a sleeping baby.

Remember: If you find this tricky, use my sentence starter to help.

The forest was as quiet as a _____.



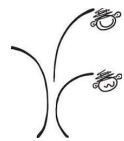
Challenge



Write another sentence telling me another animal's thoughts. Can you use an exclamation mark to show they are worried and scared for mouse?

Handwriting

Practise forming these letters correctly, remember three by the tree. Then, write the sentence below in your best Kinetic Letters handwriting.



T

I

J

I think that Tom, Jane and Iris were not very nice to Jack, James or Timothy.

Art

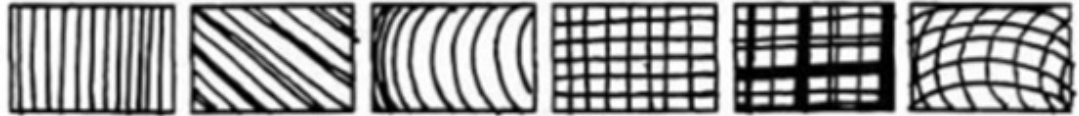
Sculpture

Last week, we learnt about the different ways artists make sculptures and the materials they use. Before sculptors begin to make their sculptures, they have to draw their design first. Many artists are inspired by nature and look at plants for inspiration.



Have a look at this famous picture of sunflowers by **Vincent Van Gogh**.



	<p>Look closely at the detail and shape of the petals and leaves. Look at how some of the leaves and petals droop down, and others stick up, how some leaves are curvy and oval, and others are pointy and sharp. Talk to someone in your house about what you can see.</p> <p>Today, I would like you to practise your sketching by creating a detailed sketch of a sunflower. You can use the image attached below or find one of your own. Think carefully about the shape of the leaves and petals and the detailed patterns in the centre of the flower. When it is completed, email me a picture so that I can see your wonderful effort.</p> <p><u>Remember</u> to think about the lines we have already practised in Year 2. Here are some examples to remind you.</p> 
<p>Extra fun:</p>	<p>Want to continue practising your skills? Find an object in your house, sketch it and add the details using different lines. Again, I would love to see your sketches, so email them to me.</p>

SPaG activity

Add the correct conjunction to this sentence.

and or

Choose one _____ I'll choose it for you.



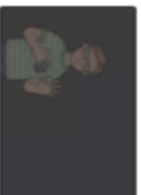
a

What type of word is 'dark' in this sentence? Circle one.

The room was dark.

adjective

noun



c

Which common exception word, that you might remember from year 1, has Mr Whoops been juggling with?

d



Find the hidden words in this mini word search.

e

poor r g j p n a
most u b m o s t
cold h a l o q s
fast M y n r d a
Mr r p s y s f
any o c o l d M

Use two of these words to make one new compound word.

b

man door super

Use this noun phrase and these adjectives to write an expanded noun phrase in a full sentence.

f

a dog
brown furry



Answers

Add the correct conjunction to this sentence.

and or

Choose one **or** I'll choose it for you.

a

What type of word is 'dark' in this sentence? Circle one.

The room was dark.

adjective

noun

c

Which common exception word, that you might remember from year 1, has Mr Whoops been juggling with?

once

d

Find the hidden words in this mini word search.

poor r g j p n a
most u b n s t
cold h l o q s
fast M y n r d s
Mr f p s y s f
any o e o l d M

e

Use two of these words to make one new compound word.

man door super

superman

doorman

b

Use this noun phrase and these adjectives to write an expanded noun phrase in a full sentence.

a dog

brown furry

a brown, furry dog OR a furry,

brown dog within a full sentence with a capital letter and full stop.

f

Art activity





Maths

Quick recap

1. 2, 4, 7
2. 3, 5, 8
3. 3, 9, 14
4. 17, 18, 22
5. 8, 18, 28
6. 58, 82, 88
7. 14, 34, 54
8. 8, 40, 55

Main questions

1. $10-3=7$ $10-7=3$ $3+7=10$ $7+3=10$
2. $9-5=4$ $9-4=5$ $4+5=9$ $5+4=9$
3. $10-5=5$ $10-5=5$ $5+5=10$ $5+5=10$
4. $8-4=4$ $8-4=4$ $4+4=8$ $4+4=8$
5. $20-12=8$ $20-8=12$ $8+12=20$ $12+8=20$
6. $17-3=14$ $17-4=13$ $3+14=17$ $14+3=17$
7. $20-9=11$ $20-11=9$ $11+9=20$ $9+11=20$
8. $15-7=8$ $15-8=7$ $8+7=15$ $7+8=15$
9. $29-17=12$ $29-12=17$ $12+17=29$ $17+12=29$

10. $23-16=7$ $23-7=16$ $16+7=23$ $7+16=23$

11. $30-22=8$ $30-8=22$ $22+8=30$ $8+20=30$

12. $42-17=15$ $42-15=17$ $15+17=42$ $17+15=42$

Challenge

Using our rules, we can find this fact family.

$58-45=13$ Biggest number first when subtracting.

$58-13=45$

$45+13=58$ Biggest number last when adding.

$13+45=58$

There are 2 addition and 2 subtraction number sentences in this fact family.

I have checked each number sentence is correct.